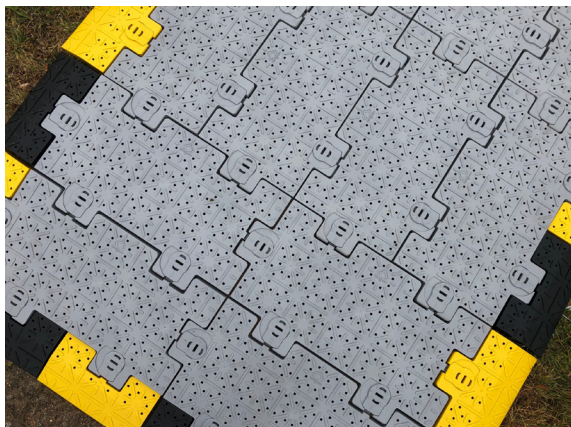


PRODUCT SPECIFICATION

STADIA X



A true all-rounder in the world of medium-duty flooring systems, Stadia X offers resilience and versatility, in a wide range of different applications.



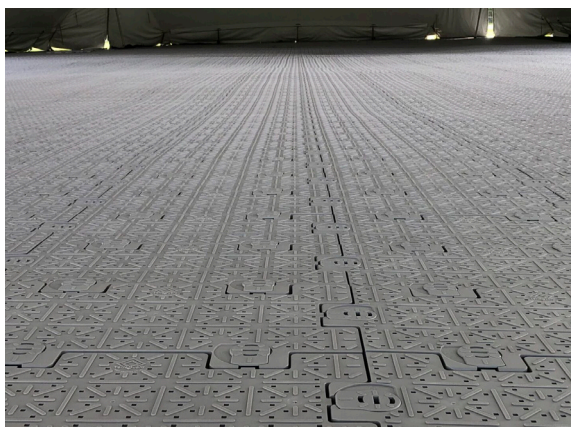
Stadia X not only provides excellent ground protection for pedestrian access, it is also the first product that can accommodate moving vehicles with an axle weight of up to 2.5 tonnes.

Ground-dependent, Stadia X can also withstand a high level of static loading - approximately 70 tonnes per m². It's load-bearing capacity means Stadia X can also be considered for uses such as Heli-pads or car parks

Stadia X is ventilated to allow light air and water to penetrate through and promote grass growth. Stadia X can also be installed within temporary structures to enable staff working environments or comfortable accommodation areas.

Fast assembly and breakdown

Developed with the user in mind, making it one of the most straightforward temporary flooring systems available. The "T-peg" design and the unique integrated cam locks allow rapid deployment, with the minimum of manpower and no specialist tools. The multi-directional anti-slip surface makes Stadia X one of the safest temporary flooring solutions available.



Material: PPCP

Ambient Temperature range: -49 to +50 °C

Panel size: 570mm x 285mm

Max Gross vehicle weight: 2,500kg*

Sheet Size: 2.3m x 1.15m
or 1.15m x 1.15m

Max Static Load: Up to 80,000kg per m²

Panel thickness: 30mm

Operating Parameters:

Panel weight: 1330g (8.19kg per m²)

- Self-draining, inert and non-conductive
- Multi Directional Anti slip surface
- Resistant to solvents and non-corroding
- Resistant to UV damage
- Manually deployed and can be laid in straight runs or pads
- Deployment of up to 70m² per hour per person

Suitable Surfaces: Turf, soil, sand, gravel, snow, grass.

*Ground dependant.